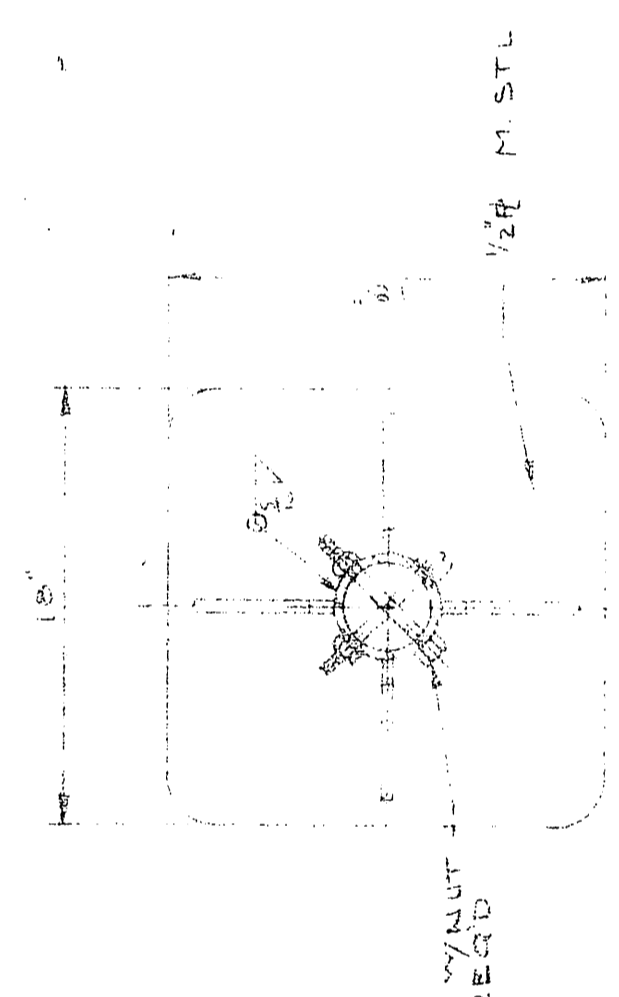


REV.	BY	DATE	DESCRIPTION



1/2" ST. STEEL BOLT WITH
4" O.D. PIN, 4" REQ'D

STERN TOWING LIGHT
YELLOW 155°
REF. TO DET. 1
ON SHEET TWO

NOTE: RUNGS STAGGERED EXCEPT
WHERE NOTED

DOUBLE RUNG
1/4" DIA. BUNG
4" SCH 80 ALUM. PIPE

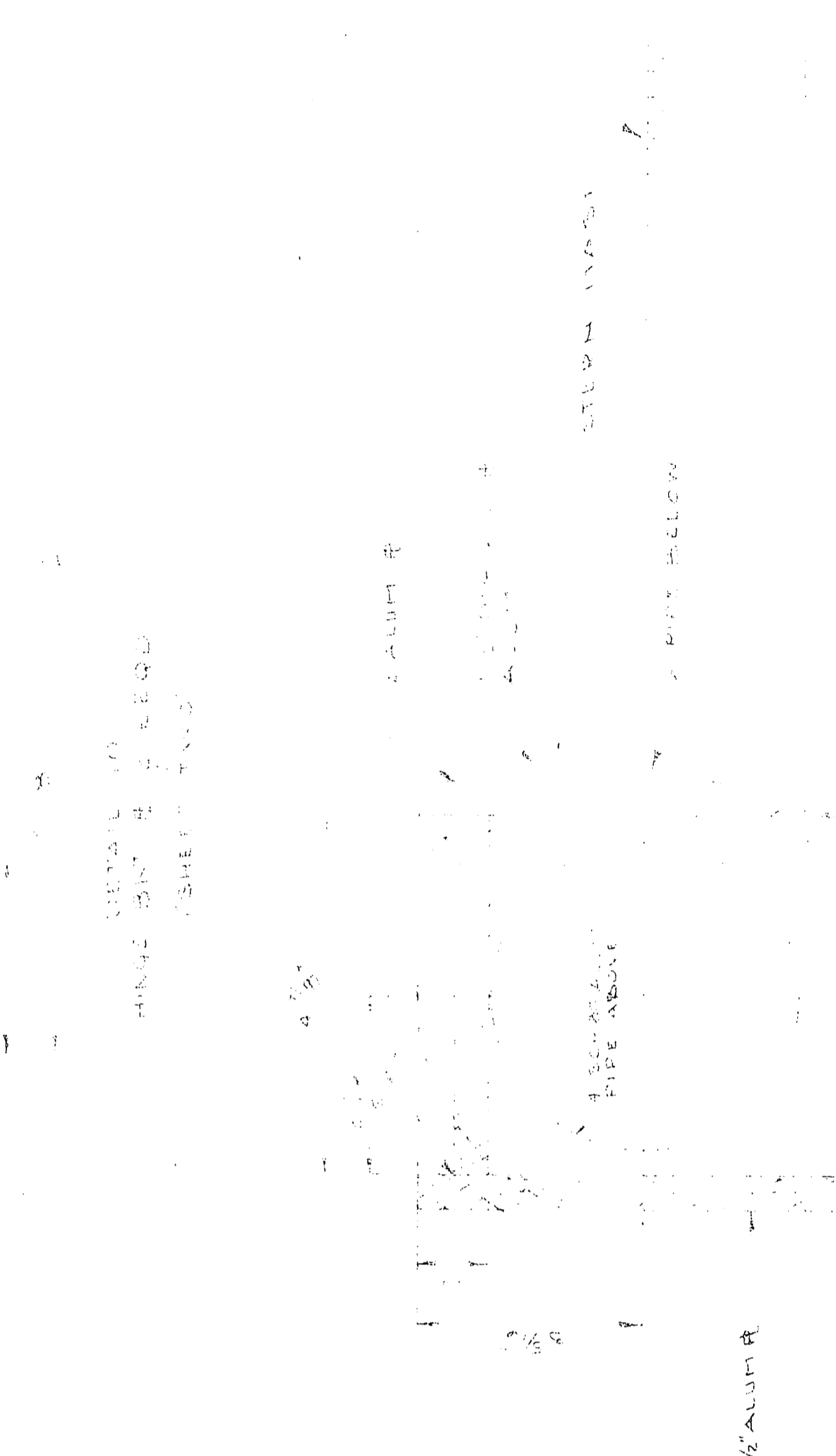
STERN LIGHT
WHITE 155°

SLE DET. 1

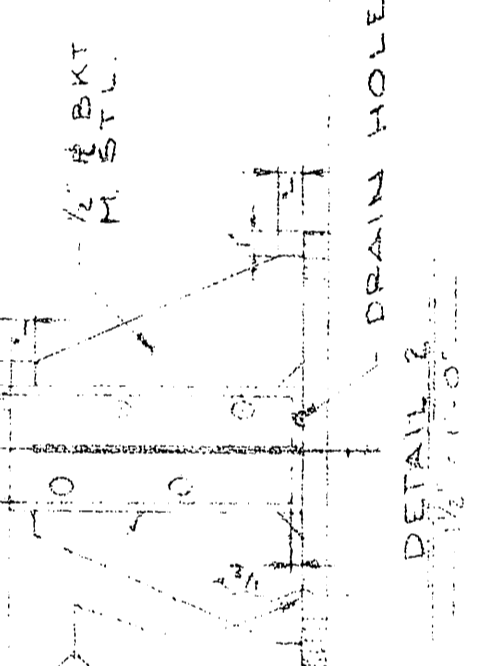
1/2" ST. STEEL MECH. TUBING
3" O.D. 1/2" I.D. DET. 2

BRIDGE DK

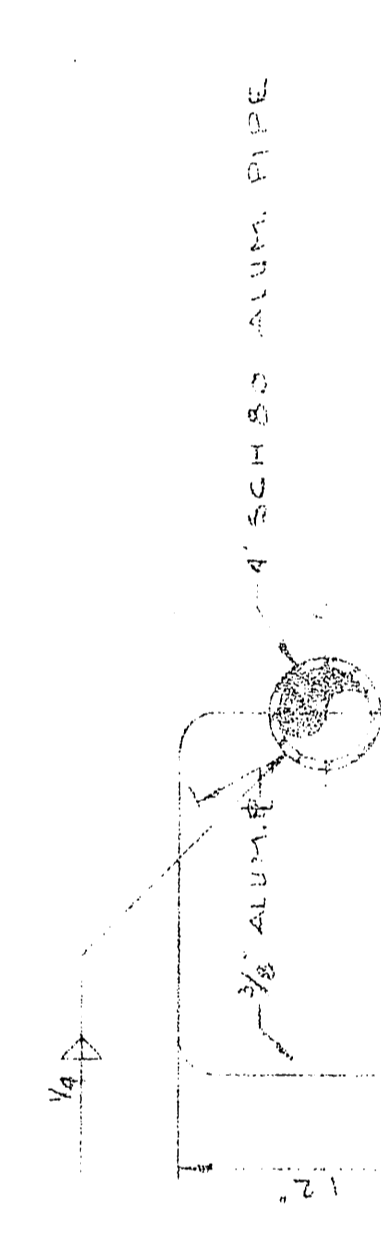
ART. HSE. BUD. ON FR. 31



SECTION B-B
1/2" DIA. HOLE
HALF DIA. PIPE ABOUT



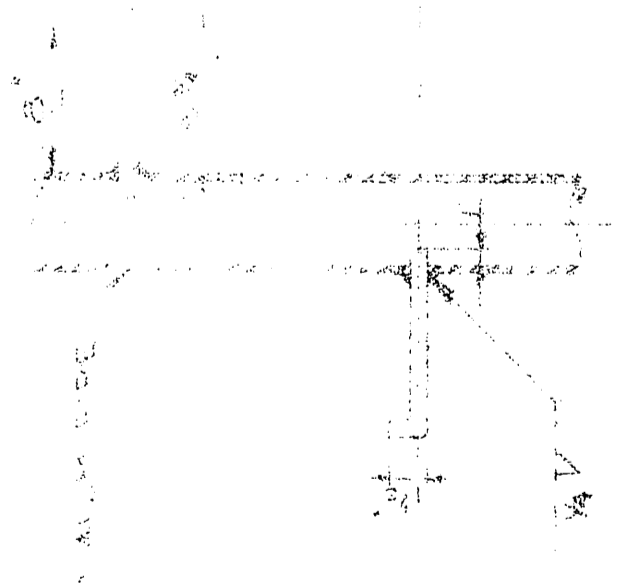
DETAIL 2
1/2" DIA. HOLE
1/4" DIA. HOLE



4" SCH 80 ALUM. PIPE

2" SCH 80 ALUM. PIPE

DETAIL 4
1/2" DIA. HOLE
1/4" DIA. HOLE



SECTION A-A
1/2" DIA. HOLE
1/4" DIA. HOLE

DETAIL 5
1/2" DIA. HOLE
1/4" DIA. HOLE

DESIGN ASSOCIATES, INC.
NAVAL ARCHITECTS NEW ORLEANS, LA. MARINE ENGINEERS

TIEUP WATER MARINE SERVICE

1434 56' X 10' 0" SEISMIC VESSEL

MAST & DETAILS
(SHEET ONE)

Drawn: [Signature]	Check: [Signature]
Traced: [Signature]	Date: [Date]
Approved: [Signature]	Date: [Date]

Sheet: 01 of 2 Drawing No. G-2567-258